

Title:
Figure 10-2-01 Tree Impact Plan

Document:
Volume 2
Arboriculture
Environmental Statement (ES)

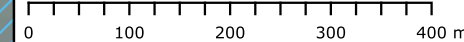
- Legend:
- Order Limits
 - Cable Route Corridor
 - Highway Improvement Areas
 - Solar PV Access Location
 - Solar PV Area
 - Substation/BESS
 - Access Track
 - Conservation Area
 - Tree Preservation Order
 - Veteran Tree Buffer Zone
 - Root Protection Area
- Tree Stem Position**
- Category A tree (high quality)
 - Category B tree (moderate quality)
 - Category C tree (low quality)
 - Category U tree (very low quality)
- Tree Canopy Spread**
- Category A tree (high quality)
 - Category B tree (moderate quality)
 - Category C tree (low quality)
 - Category U tree (very low quality)
 - Possible Tree Impacts

Please note that trees within the Sites have been plotted on a topographical survey. The positions of trees within the Cable Route Corridor have been estimated based on aerial imagery.
Data: Lanpro, 2025; IGP, 2025
Base Maps: © Crown copyright and database rights 2025 Ordnance Survey 0100031673




APFP Regulation: 5(2)(a)
Application Doc no.: EN010168/APP/6.2
Drawing no.: P4443_LPR_ZZ_XX_DR_Z_ARB_0318

Co-ordinate system: OSGB36 / British National Grid
Scale: 1:7501 @ A3







Title:

Figure 10-2-02 Tree Impact Plan

Document:

Volume 2
Arboriculture
Environmental Statement (ES)

Legend:

Order Limits

Cable Route Corridor

Highway Improvement Areas

Solar PV Crossing Location

Solar PV Area

Substation/BESS

Access Track

Root Protection Area

Tree Stem Position

Category A tree (high quality)

Category B tree (moderate quality)

Category C tree (low quality)

Category U tree (very low quality)

Tree Canopy Spread

Category A tree (high quality)

Category B tree (moderate quality)

Category C tree (low quality)


Category U tree (very low quality)

Possible Tree Impacts

Please note that trees within the Sites have been plotted on a topographical survey. The positions of trees within the Cable Route Corridor have been estimated based on aerial imagery.

Data: Lanpro, 2025; IGP, 2025

Base Maps: © Crown copyright and database rights 2025 Ordnance Survey 0100031673



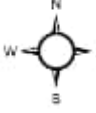
APFP Regulation: 5(2)(a)

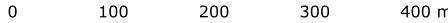
Application Doc no.: EN010168/APP/6.2



Drawing no.: P4443_LPR_ZZ_XX_DR_Z_ARB_0318

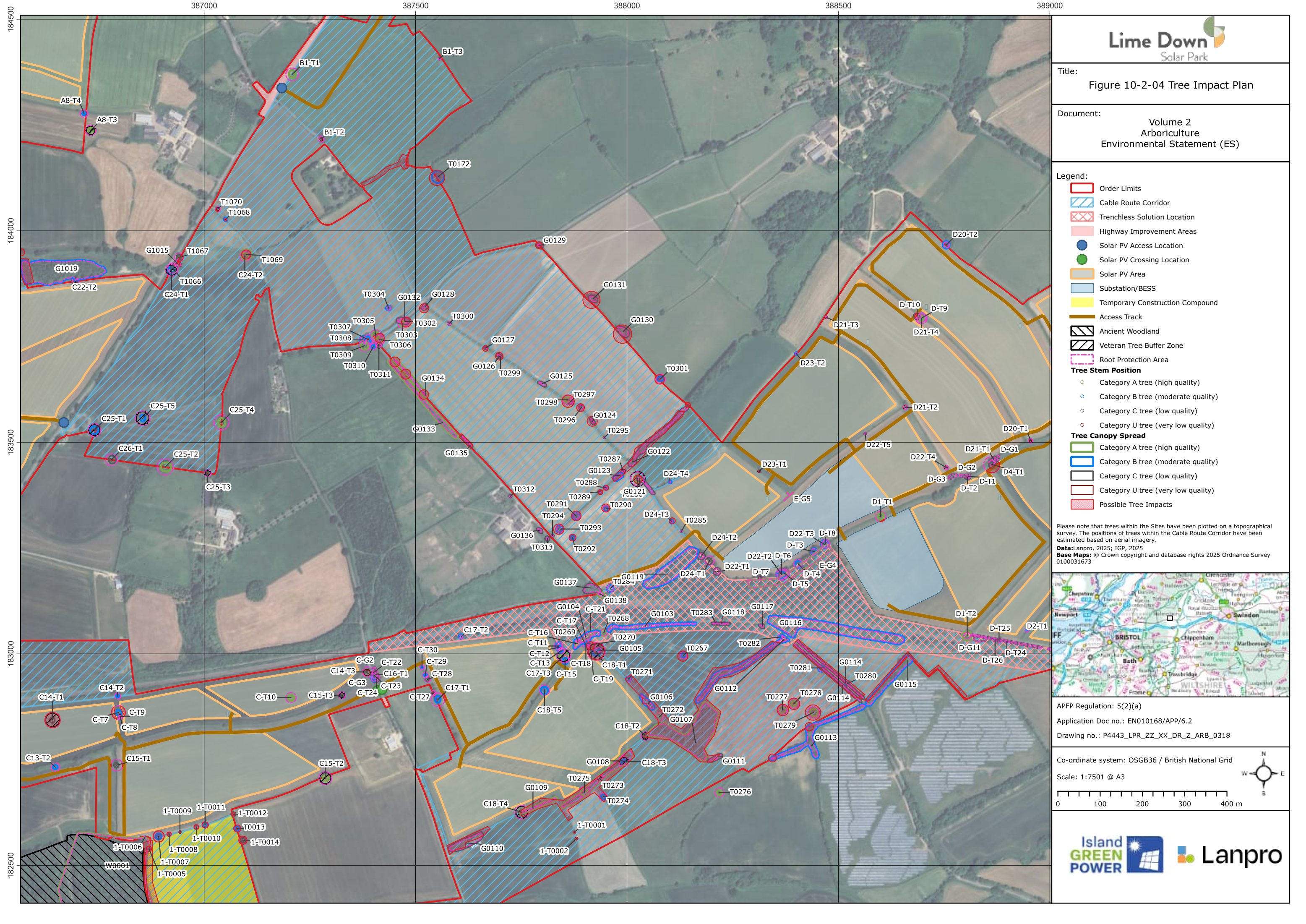
Co-ordinate system: OSGB36 / British National Grid

Scale: 1:7501 @ A3











Title:
Figure 10-2-08 Tree Impact Plan

Document:
Volume 2
Arboriculture
Environmental Statement (ES)

- Legend:
- Order Limits
 - Cable Route Corridor
 - Trenchless Solution Location
 - Highway Improvement Areas
 - Solar PV Area
 - Temporary Construction Compound
 - Ancient Woodland
 - Root Protection Area
 - Tree Stem Position**
 - Category A tree (high quality)
 - Category B tree (moderate quality)
 - Category C tree (low quality)
 - Tree Canopy Spread**
 - Category A tree (high quality)
 - Category B tree (moderate quality)
 - Category C tree (low quality)
 - Possible Tree Impacts

Please note that trees within the Sites have been plotted on a topographical survey. The positions of trees within the Cable Route Corridor have been estimated based on aerial imagery.
Data: Lanpro, 2025; IGP, 2025
Base Maps: © Crown copyright and database rights 2025 Ordnance Survey 0100031673



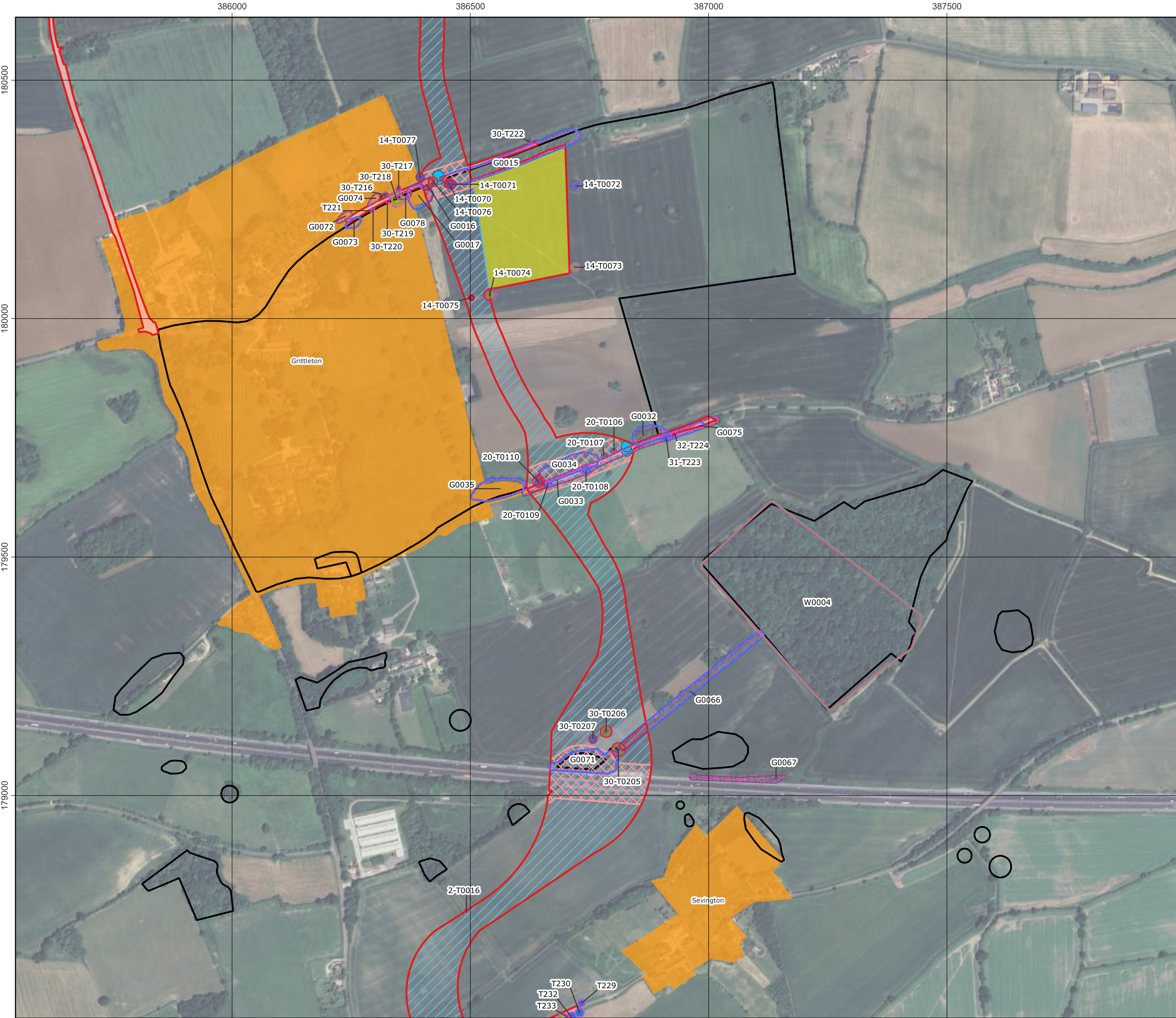
APFP Regulation: 5(2)(a)
Application Doc no.: EN010168/APP/6.2
Drawing no.: P4443_LPR_ZZ_XX_DR_Z_ARB_0318

Co-ordinate system: OSGB36 / British National Grid
Scale: 1:7501 @ A3



0 100 200 300 400 m





Title:
Figure 10-2-09 Tree Impact Plan

Document:
Volume 2
Arboriculture
Environmental Statement (ES)

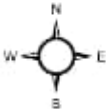
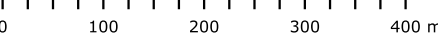
- Legend:
- Order Limits
 - Cable Route Corridor
 - Trenchless Solution Location
 - Highway Improvement Areas
 - Temporary Construction Compound
 - Access Point (Cable Corridor)
 - Conservation Area
 - Tree Preservation Order
 - Root Protection Area
 - Tree Stem Position**
 - Category A tree (high quality)
 - Category B tree (moderate quality)
 - Category C tree (low quality)
 - Category U tree (very low quality)
 - Tree Canopy Spread**
 - Category A tree (high quality)
 - Category B tree (moderate quality)
 - Category C tree (low quality)
 - Category U tree (very low quality)
 - Possible Tree Impacts

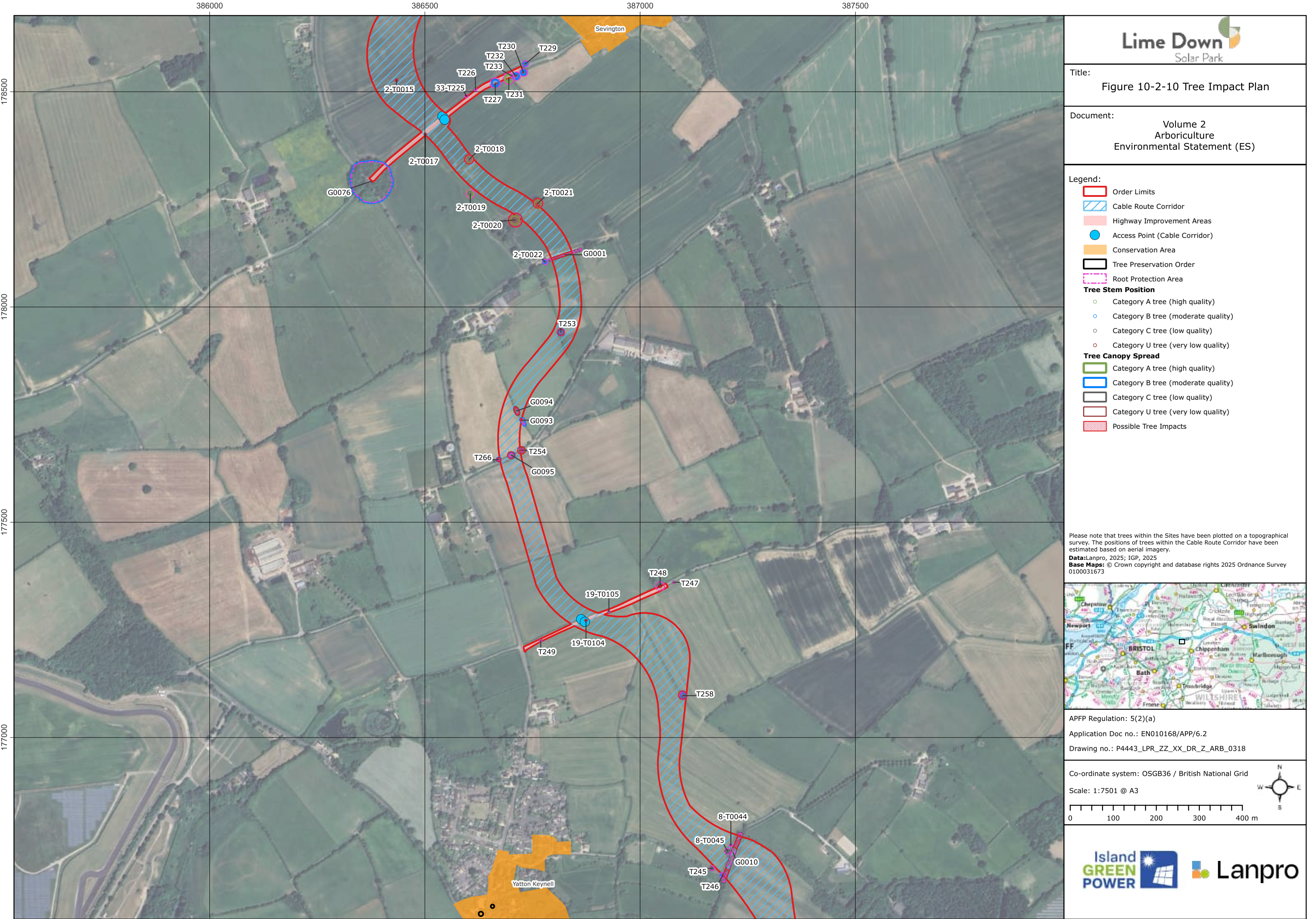
Please note that trees within the Sites have been plotted on a topographical survey. The positions of trees within the Cable Route Corridor have been estimated based on aerial imagery.
Data: Lanpro, 2025; IGP, 2025
Base Maps: © Crown copyright and database rights 2025 Ordnance Survey 0100031673

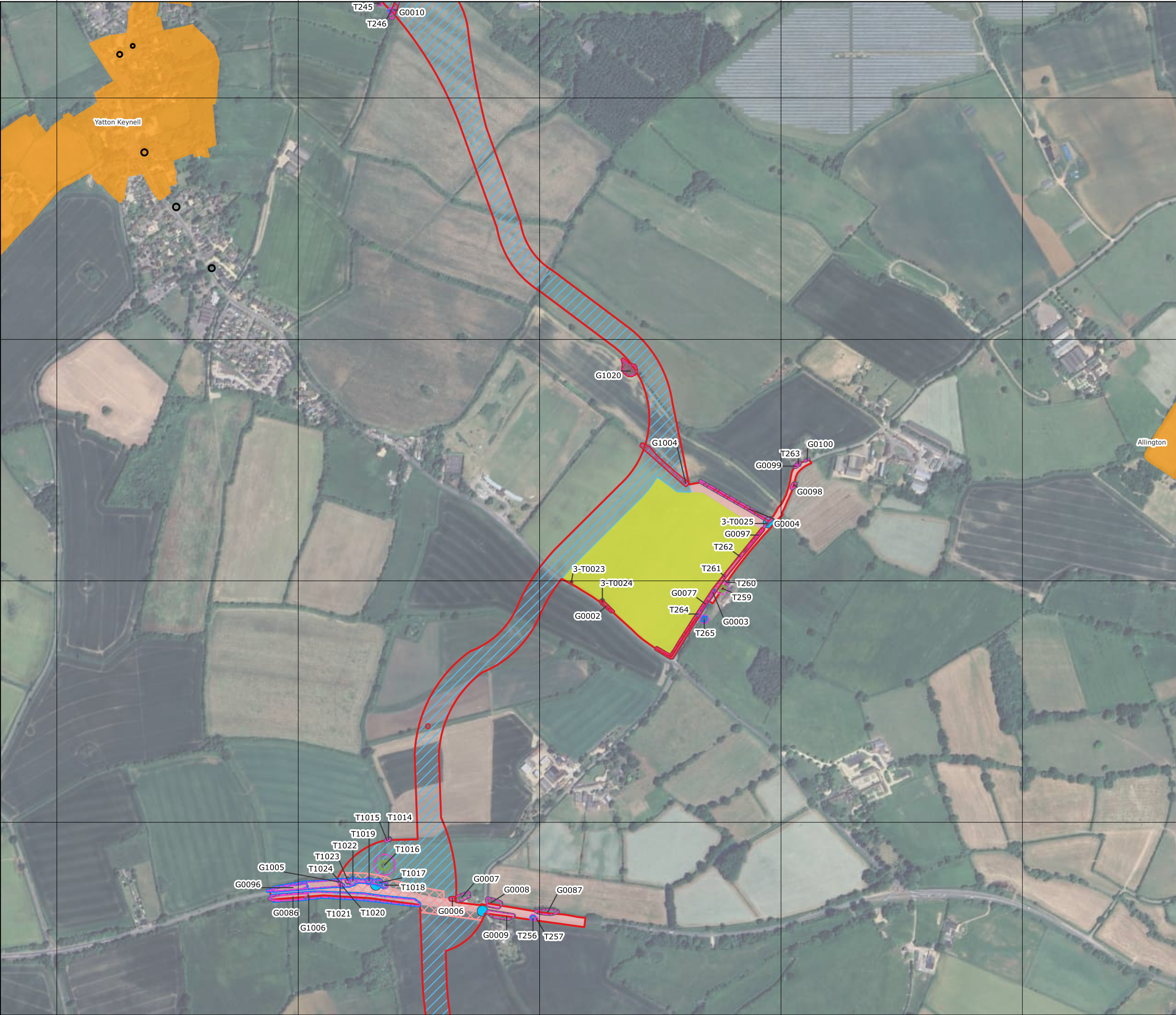


APFP Regulation: 5(2)(a)
Application Doc no.: EN010168/APP/6.2
Drawing no.: P4443_LPR_ZZ_XX_DR_Z_ARB_0318

Co-ordinate system: OSGB36 / British National Grid
Scale: 1:7501 @ A3







Title:

Figure 10-2-11 Tree Impact Plan

Document:

Volume 2
Arboriculture
Environmental Statement (ES)

Legend:

Order Limits

Cable Route Corridor

Trenchless Solution Location

Highway Improvement Areas

Temporary Construction Compound

Access Point (Cable Corridor)

Conservation Area

Tree Preservation Order

Root Protection Area

Tree Stem Position

Category A tree (high quality)

Category B tree (moderate quality)

Category C tree (low quality)

Category U tree (very low quality)

Tree Canopy Spread

Category A tree (high quality)

Category B tree (moderate quality)

Category C tree (low quality)

Category U tree (very low quality)

Possible Tree Impacts

Please note that trees within the Sites have been plotted on a topographical survey. The positions of trees within the Cable Route Corridor have been estimated based on aerial imagery.

Data: Lanpro, 2025; IGP, 2025

Base Maps: © Crown copyright and database rights 2025 Ordnance Survey 0100031673

APFP Regulation: 5(2)(a)

Application Doc no.: EN010168/APP/6.2

Drawing no.: P4443_LPR_ZZ_XX_DR_Z_ARB_0318

Co-ordinate system: OSGB36 / British National Grid

Scale: 1:7501 @ A3



Title:
Figure 10-2-12 Tree Impact Plan

Document:
Volume 2
Arboriculture
Environmental Statement (ES)

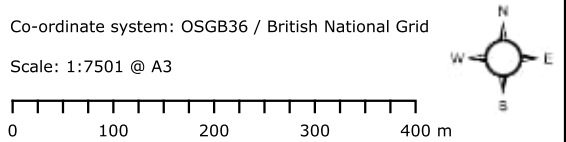
- Legend:
- Order Limits
 - Cable Route Corridor
 - Highway Improvement Areas
 - Temporary Construction Compound
 - Access Point (Cable Corridor)
 - Conservation Area
 - Ancient Woodland
 - Root Protection Area
 - Tree Stem Position**
 - Category A tree (high quality)
 - Category B tree (moderate quality)
 - Category C tree (low quality)
 - Tree Canopy Spread**
 - Category A tree (high quality)
 - Category B tree (moderate quality)
 - Category C tree (low quality)
 - Possible Tree Impacts

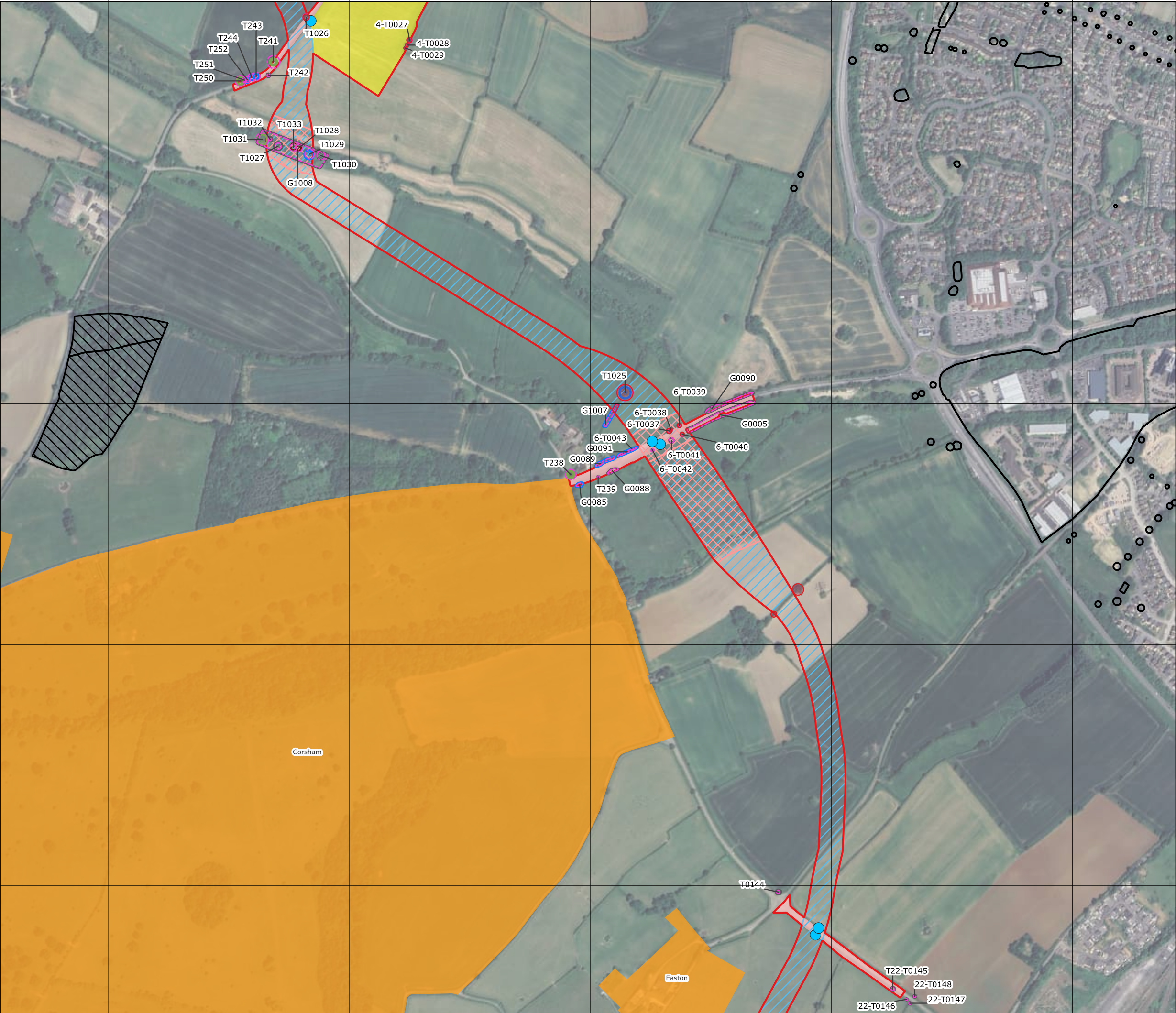
Please note that trees within the Sites have been plotted on a topographical survey. The positions of trees within the Cable Route Corridor have been estimated based on aerial imagery.
Data: Lanpro, 2025; IGP, 2025
Base Maps: © Crown copyright and database rights 2025 Ordnance Survey 0100031673




APFP Regulation: 5(2)(a)
Application Doc no.: EN010168/APP/6.2
Drawing no.: P4443_LPR_ZZ_XX_DR_Z_ARB_0318

Co-ordinate system: OSGB36 / British National Grid
Scale: 1:7501 @ A3







Title:

Figure 10-2-13 Tree Impact Plan

Document:

Volume 2
Arboriculture
Environmental Statement (ES)

Legend:

- Order Limits
- Cable Route Corridor
- Trenchless Solution Location
- Highway Improvement Areas
- Temporary Construction Compound
- Access Point (Cable Corridor)
- Conservation Area
- Tree Preservation Order
- Ancient Woodland
- Root Protection Area

Tree Stem Position

- Category A tree (high quality)
- Category B tree (moderate quality)
- Category C tree (low quality)
- Category U tree (very low quality)


Tree Canopy Spread

- Category A tree (high quality)
- Category B tree (moderate quality)
- Category C tree (low quality)
- Category U tree (very low quality)
- Possible Tree Impacts

Please note that trees within the Sites have been plotted on a topographical survey. The positions of trees within the Cable Route Corridor have been estimated based on aerial imagery.

Data: Lanpro, 2025; IGP, 2025

Base Maps: © Crown copyright and database rights 2025 Ordnance Survey 0100031673



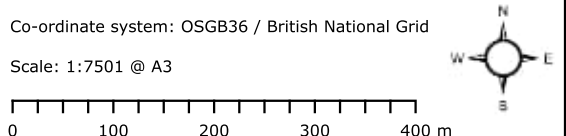
APFP Regulation: 5(2)(a)



Application Doc no.: EN010168/APP/6.2

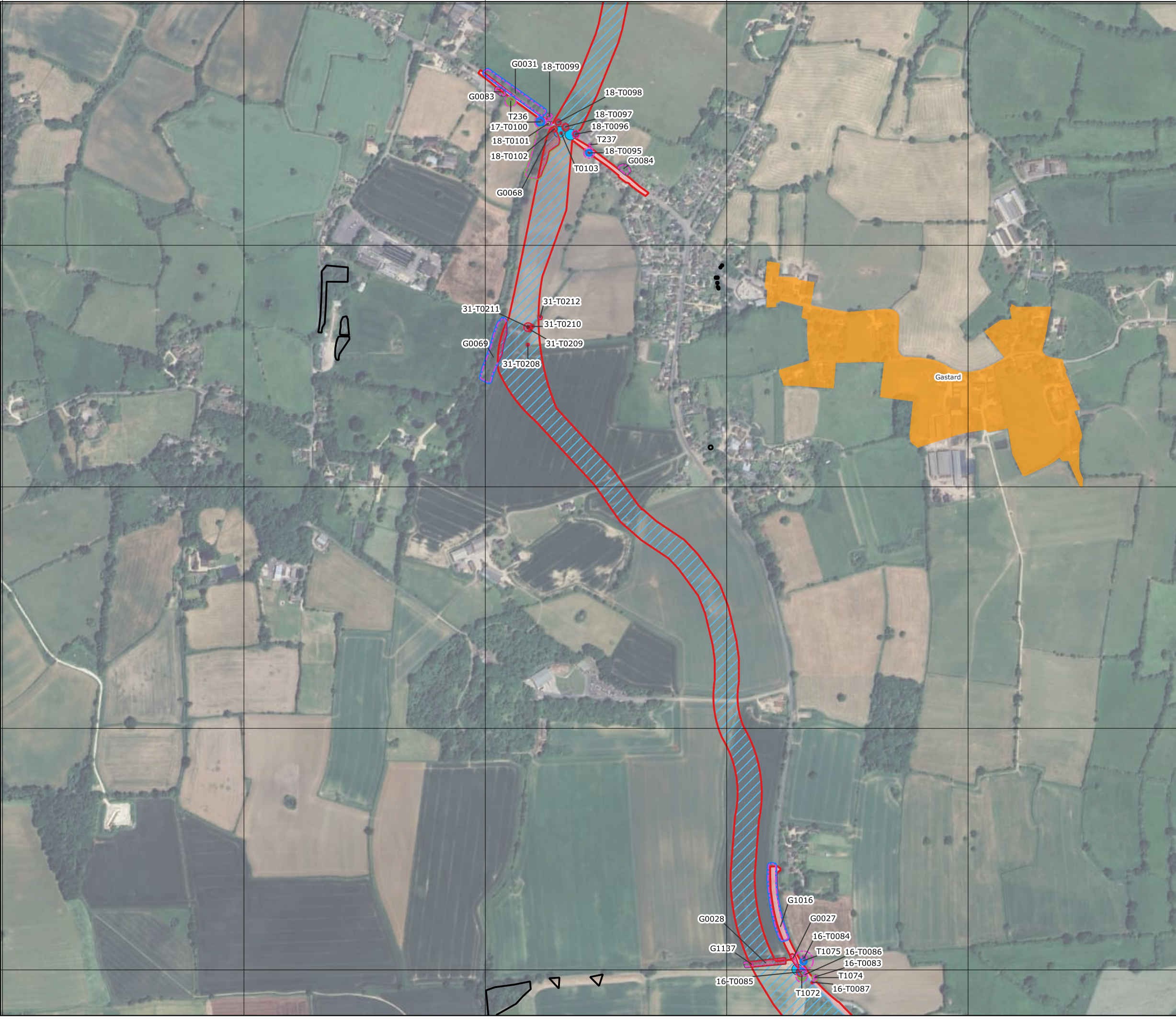
Drawing no.: P4443_LPR_ZZ_XX_DR_Z_ARB_0318

Co-ordinate system: OSGB36 / British National Grid

Scale: 1:7501 @ A3







Title:
Figure 10-2-15 Tree Impact Plan

Document:
Volume 2
Arboriculture
Environmental Statement (ES)

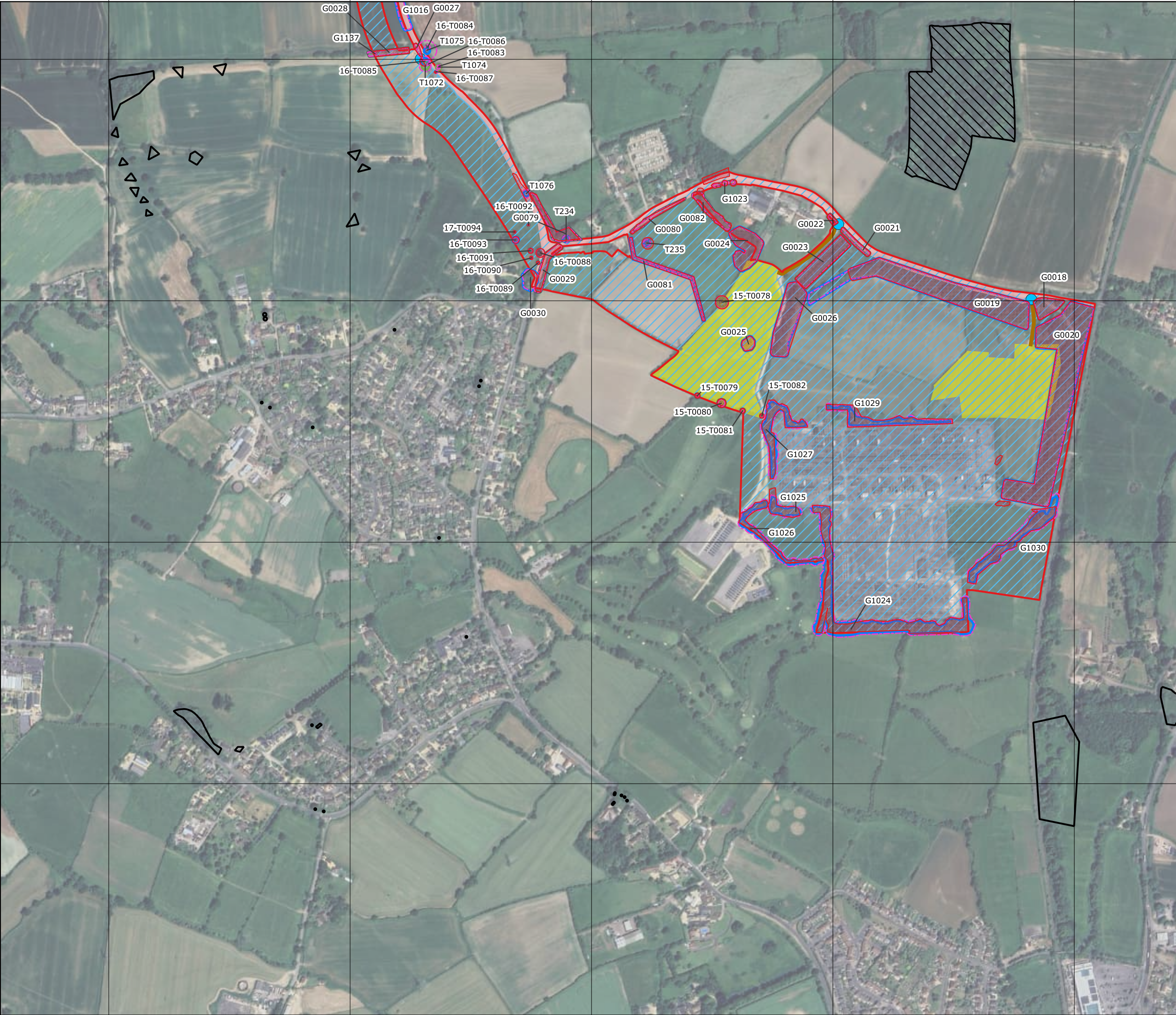
- Legend:
- Order Limits
 - Cable Route Corridor
 - Highway Improvement Areas
 - Access Point (Cable Corridor)
 - Conservation Area
 - Tree Preservation Order
 - Root Protection Area
 - Tree Stem Position**
 - Category A tree (high quality)
 - Category B tree (moderate quality)
 - Category C tree (low quality)
 - Category U tree (very low quality)
 - Tree Canopy Spread**
 - Category A tree (high quality)
 - Category B tree (moderate quality)
 - Category C tree (low quality)
 - Category U tree (very low quality)
 - Possible Tree Impacts


Please note that trees within the Sites have been plotted on a topographical survey. The positions of trees within the Cable Route Corridor have been estimated based on aerial imagery.
Data: Lanpro, 2025; IGP, 2025
Base Maps: © Crown copyright and database rights 2025 Ordnance Survey 0100031673



APFP Regulation: 5(2)(a)
Application Doc no.: EN010168/APP/6.2
Drawing no.: P4443_LPR_ZZ_XX_DR_Z_ARB_0318

Co-ordinate system: OSGB36 / British National Grid
Scale: 1:7501 @ A3





Title:

Figure 10-2-16 Tree Impact Plan

Document:

Volume 2
Arboriculture
Environmental Statement (ES)

Legend:

Order Limits

Cable Route Corridor

Highway Improvement Areas

Temporary Construction Compound

Tree Stem Position

Category A tree (high quality)

Tree Canopy Spread

Category A tree (high quality)

Please note that trees within the Sites have been plotted on a topographical survey. The positions of trees within the Cable Route Corridor have been estimated based on aerial imagery.

Data: Lanpro, 2025; IGP, 2025

Base Maps: © Crown copyright and database rights 2025 Ordnance Survey 0100031673



APFP Regulation: 5(2)(a)

Application Doc no.: EN010168/APP/6.2

Drawing no.: P4443_LPR_ZZ_XX_DR_Z_ARB_0318

Co-ordinate system: OSGB36 / British National Grid

Scale: 1:7501 @ A3









Title:
Figure 10-2-17 Tree Impact Plan

Document:
Volume 2
Arboriculture
Environmental Statement (ES)

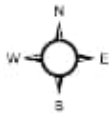
- Legend:
- Order Limits
 - Highway Improvement Areas
 - Conservation Area
 - Tree Preservation Order
 - Ancient Woodland

Please note that trees within the Sites have been plotted on a topographical survey. The positions of trees within the Cable Route Corridor have been estimated based on aerial imagery.
Data: Lanpro, 2025; IGP, 2025
Base Maps: © Crown copyright and database rights 2025 Ordnance Survey 0100031673

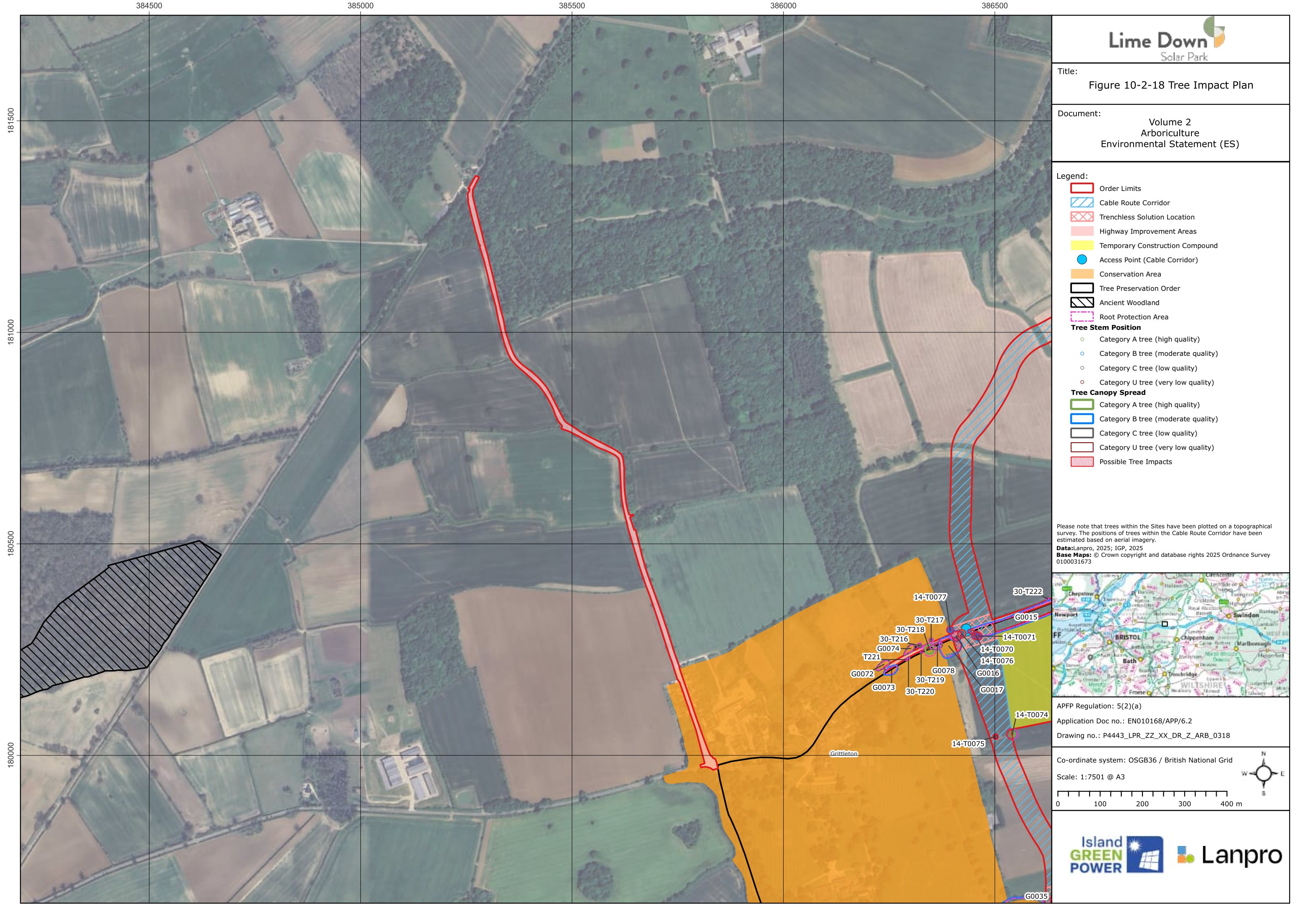


APFP Regulation: 5(2)(a)
Application Doc no.: EN010168/APP/6.2
Drawing no.: P4443_LPR_ZZ_XX_DR_Z_ARB_0318

Co-ordinate system: OSGB36 / British National Grid
Scale: 1:7501 @ A3



0 100 200 300 400 m



Title:
Figure 10-2-18 Tree Impact Plan

Document:
Volume 2
Arboriculture
Environmental Statement (ES)

- Legend:
- Order Limits
 - Cable Route Corridor
 - Trenchless Solution Location
 - Highway Improvement Areas
 - Temporary Construction Compound
 - Access Point (Cable Corridor)
 - Conservation Area
 - Tree Preservation Order
 - Ancient Woodland
 - Root Protection Area
 - Tree Stem Position**
 - Category A tree (high quality)
 - Category B tree (moderate quality)
 - Category C tree (low quality)
 - Category U tree (very low quality)
 - Tree Canopy Spread**
 - Category A tree (high quality)
 - Category B tree (moderate quality)
 - Category C tree (low quality)
 - Category U tree (very low quality)
 - Possible Tree Impacts

Please note that trees within the Sites have been plotted on a topographical survey. The positions of trees within the Cable Route Corridor have been estimated based on aerial imagery.
Data: Lanpro, 2025; IGP, 2025
Base Maps: © Crown copyright and database rights 2025 Ordnance Survey 0100031673



APFP Regulation: 5(2)(a)
Application Doc no.: EN010168/APP/6.2
Drawing no.: P4443_LPR_ZZ_XX_DR_Z_ARB_0318

Co-ordinate system: OSGB36 / British National Grid
Scale: 1:7501 @ A3

0 100 200 300 400 m



Title:
Figure 10-2-19 Tree Impact Plan

Document:
Volume 2
Arboriculture
Environmental Statement (ES)

- Legend:
- Order Limits
 - Highway Improvement Areas
 - Conservation Area
 - Tree Preservation Order
 - Ancient Woodland

Please note that trees within the Sites have been plotted on a topographical survey. The positions of trees within the Cable Route Corridor have been estimated based on aerial imagery.
Data: Lanpro, 2025; IGP, 2025
Base Maps: © Crown copyright and database rights 2025 Ordnance Survey 0100031673



APFP Regulation: 5(2)(a)
Application Doc no.: EN010168/APP/6.2
Drawing no.: P4443_LPR_ZZ_XX_DR_Z_ARB_0318

Co-ordinate system: OSGB36 / British National Grid
Scale: 1:7501 @ A3



375500

376000

376500

377000

377500

182000

181500

181000

180500



Title:
Figure 10-2-20 Tree Impact Plan

Document:
Volume 2
Arboriculture
Environmental Statement (ES)

- Legend:
- Order Limits
 - Highway Improvement Areas
 - Ancient Woodland

Please note that trees within the Sites have been plotted on a topographical survey. The positions of trees within the Cable Route Corridor have been estimated based on aerial imagery.
Data: Lanpro, 2025; IGP, 2025
Base Maps: © Crown copyright and database rights 2025 Ordnance Survey 0100031673



APFP Regulation: 5(2)(a)
Application Doc no.: EN010168/APP/6.2
Drawing no.: P4443_LPR_ZZ_XX_DR_Z_ARB_0318

Co-ordinate system: OSGB36 / British National Grid
Scale: 1:7501 @ A3





Title:
Figure 10-2-21 Tree Impact Plan

Document:
Volume 2
Arboriculture
Environmental Statement (ES)

- Legend:
- Order Limits
 - Highway Improvement Areas
 - Conservation Area
 - Ancient Woodland

Please note that trees within the Sites have been plotted on a topographical survey. The positions of trees within the Cable Route Corridor have been estimated based on aerial imagery.
Data: Lanpro, 2025; IGP, 2025
Base Maps: © Crown copyright and database rights 2025 Ordnance Survey 0100031673



APFP Regulation: 5(2)(a)
Application Doc no.: EN010168/APP/6.2
Drawing no.: P4443_LPR_ZZ_XX_DR_Z_ARB_0318

Co-ordinate system: OSGB36 / British National Grid
Scale: 1:7501 @ A3





Title:
Figure 10-2-22 Tree Impact Plan

Document:
Volume 2
Arboriculture
Environmental Statement (ES)

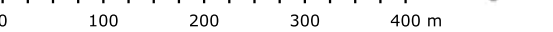
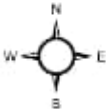
- Legend:
- Order Limits
 - Highway Improvement Areas
 - Conservation Area
 - Tree Preservation Order
 - Ancient Woodland

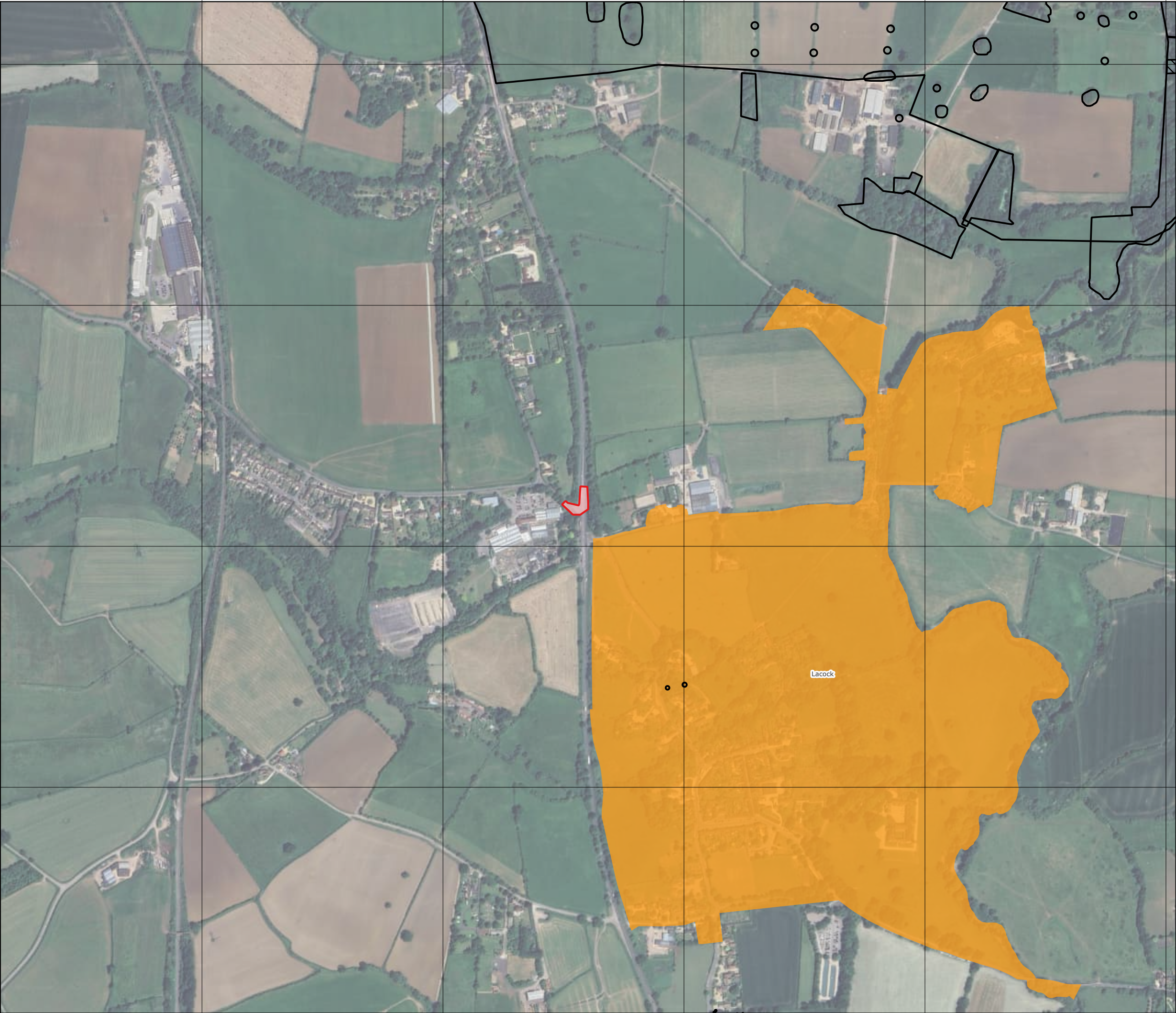
Please note that trees within the Sites have been plotted on a topographical survey. The positions of trees within the Cable Route Corridor have been estimated based on aerial imagery.
Data: Lanpro, 2025; IGP, 2025
Base Maps: © Crown copyright and database rights 2025 Ordnance Survey 0100031673




APFP Regulation: 5(2)(a)
Application Doc no.: EN010168/APP/6.2
Drawing no.: P4443_LPR_ZZ_XX_DR_Z_ARB_0318

Co-ordinate system: OSGB36 / British National Grid
Scale: 1:7501 @ A3








Title:


Figure 10-2-23 Tree Impact Plan


Document:


Volume 2
Arboriculture
Environmental Statement (ES)


Legend:

 Order Limits

 Highway Improvement Areas

 Conservation Area


 Tree Preservation Order

 Ancient Woodland

Please note that trees within the Sites have been plotted on a topographical survey. The positions of trees within the Cable Route Corridor have been estimated based on aerial imagery.

Data: Lanpro, 2025; IGP, 2025

Base Maps: © Crown copyright and database rights 2025 Ordnance Survey 0100031673



APFP Regulation: 5(2)(a)

Application Doc no.: EN010168/APP/6.2

Drawing no.: P4443_LPR_ZZ_XX_DR_Z_ARB_0318

Co-ordinate system: OSGB36 / British National Grid

Scale: 1:7501 @ A3

